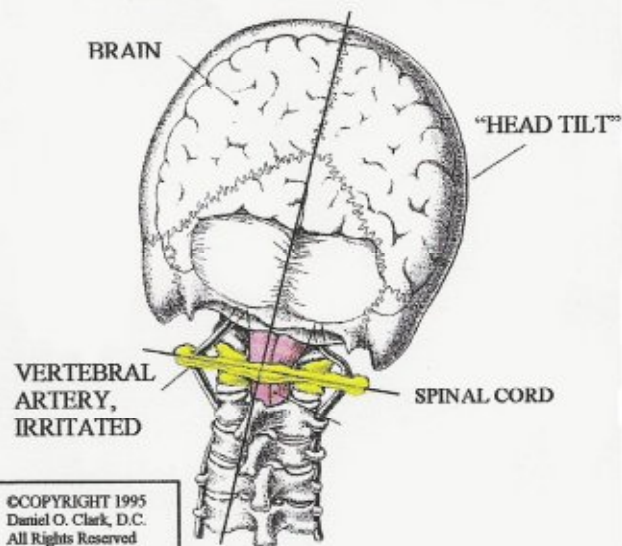


Restricted or Distorted Brain Messages



WHEN HEAD TILT DEVELOPS AND THE BODY BECOMES IMBALANCED, THE SPINAL CORD, JUST BELOW THE BRAIN STEM, BECOMES IRRITATED, RESTRICTING OR DISTORTING THE FLOW OF HEALING MESSAGES FROM THE BRAIN TO THAT PART OF THE BODY SERVICED BY THESE IRRITATED NERVES. THIS CAN CAUSE PAIN AND SUFFERING AND DECREASE THE QUALITY OF YOUR LIFE.